

SEMICON[®] *Japan 2012*

The Innovation Junction between Japan and the World



The World Largest Exhibition
for The Semiconductor
Manufacturing Supply Chain

Date: **December 5** (Wed.) ▶ **7** (Fri.)

Site: Makuhari Messe, Chiba Japan

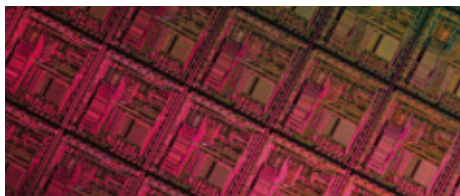
Organizer: SEMI[®]



Exhibit Zones

- Front-End Process
- Back-End Process
- Materials & Overall Process
- Next Generation Technology Pavilion
- Secondary Equipment & Services Pavilion
- Supply chain Pavilion
- LED/Organic Device Pavilion

**Exhibitor Applications to be Accepted
during SEMICON Japan 2011
(at Onsite Space Selection)**



Get the SEMICON Japan 2012 Advantage

Advantage 1: New Sales Lead Opportunities

Thousands of key decision makers attend SEMICON Japan looking for companies and solutions like yours. Visitors come from a wide range of industry segments including device makers, equipment manufacturers, materials suppliers and software providers.

Advantage 2: The World's Largest Semiconductor Manufacturing Event

SEMICON Japan is a comprehensive exposition covering everything to do with semiconductor manufacturing and related technologies. SEMICON Japan is recognized as one of the industry's largest and most significant events, bringing together over 1,000 companies from 19 countries and regions.

Advantage 3: Greater Visibility

Greater business connection and supporting for the new technology challenges, LED/OLED, 3-D packaging, printed electronics, etc. approach for new supply-chain and explore the new business relationship. SEMICON Japan is closely followed by industry experts and media from around the world. By exhibiting and advertising at SEMICON Japan you can gain valuable exposure and build brand recognition that reaches beyond the show.

Advantage 4: Extend Your Network

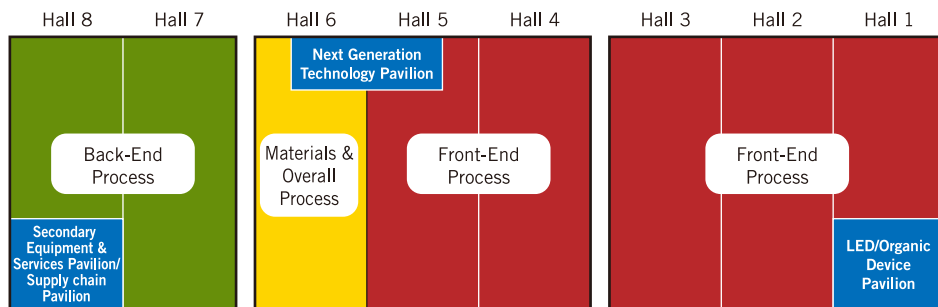
SEMICON Japan is more than a great place to develop sales leads. Your exhibit at SEMICON Japan will bring you into contact with suppliers, distributors and other potential partners, helping you to expand your global network.

2012 ZONE LAYOUT

Makuhari Messe integrates the International Exhibition Hall, International Conference Hall, and the Makuhari Event Hall on sprawling 210,000 square meters of land to form one of the most well-known convention facilities in Japan.

Location: 2-1, Nakase, Mihama-ku, Chiba-city, 261-0023 Japan

URL: www.m-messe.co.jp



*This is the New Zoning for year 2012.

Booth Fees and Types (Consumption tax is not included. 5% consumption tax will be added.)

In Japan, this will be the first year we have offered Onsite Space Selection (OSS). It is a system adopted by SEMICON events worldwide which allows exhibitors to select and reserve booths for the next year's event while at the current year show.

1. Booth Fee

Normal Booth

- Booth Size: 9m²/Booth (W3m×D3m)
- Booth Fee:

SEMI Member		Non-member	
Onsite application*	Regular application	Onsite application*	Regular application
¥304,000/Booth	¥320,000/Booth	¥427,500/Booth	¥450,000/Booth

- * OSS special booth fee apply to OSS application only.
- There is no upper limit in the number of booths.
- Any booth will be provided as raw space. (Name boards, carpets or partitions will not be included.)
- For the after OSS booth entry, please contact SEMI for the space availability.

Pavilion

- Booth size: 2m² / 4m² / 9m² (per Booth)
- Booth Fee:

	SEMI Member		Non-member	
	Onsite application*	Regular application	Onsite application*	Regular application
2m×1m (Decorated)*	—	¥130,000/Booth	—	¥150,000/Booth
2m×2m (RAW Space)	—	¥170,000/Booth	—	¥200,000/Booth
3m×3m (RAW Space)	¥304,000/Booth	¥320,000/Booth	¥427,500/Booth	¥450,000/Booth

- * OSS special application prices may apply to 3m×3m Booth size only.
- 2m×1m, 2m×2m size booth location will be assigned by SEMI (does not OSS)
- 2m×1m size booth does not allowed to combine two or more booths.
- Next Generation Technology Pavilion booth location will be assigned by SEMI Japan, ask for detail about it.

2. Booth configuration (Normal Booth and Pavilion)

• In-line

(1-8)



• Cross aisle

(4, 6, 8, 10, 12, 16)



• Peninsula

2-rows booths (4, 6, 8, 10, 12, 16)



3-rows booths (9, 12, 15, 18, 21, 24)



4-rows booths (16, 20, 28, 32)



- Exhibitors of less than 24 booths may have booths of other exhibitors on one or two sides.
- Island (24booths or more): For the detail, please contact SEMI Japan office.

For exhibits in SEMICON Japan 2012, To know the detail of OSS, please go to following URL,

<http://www.semiconjapan.org/en/content/oss>

(After SEMICON Japan 2011, please go to <http://www.semiconjapan.org/en>)